

Steel Rules

by

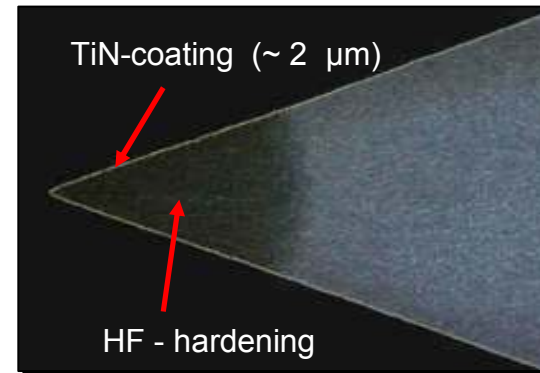
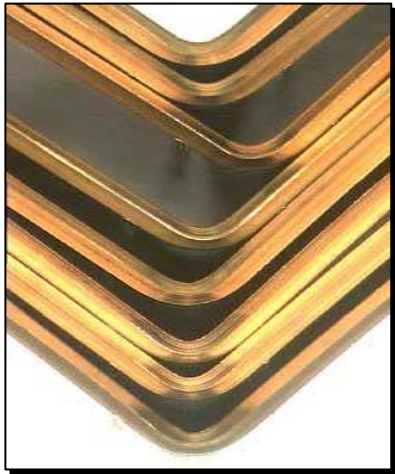
Böhler-Ybbstal Band

a **BÖHLER** UDDEHOLM
company

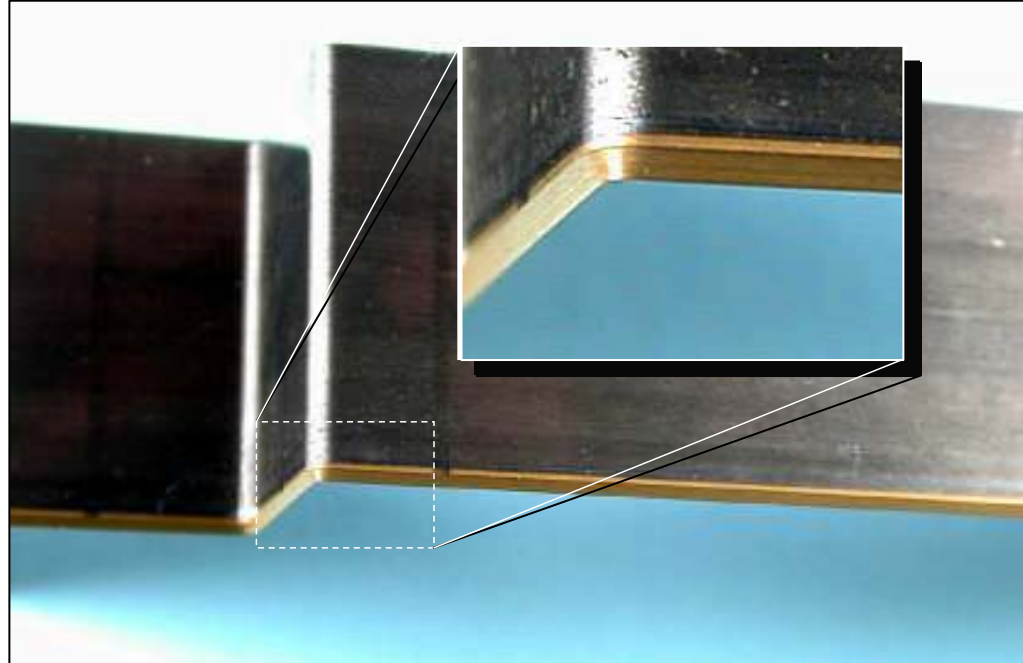


Cutting- and Scoring Rules

- Coated cutting edge surface
 - Supreme coating
 - well established coating for dust reduced applications
 - Titanium-Nitride coating
 - New development for dust reduction and increased tool life.
 - The hardness of the coating is in the range of 2400 HV. The actual edge hardness is around 620 HV.

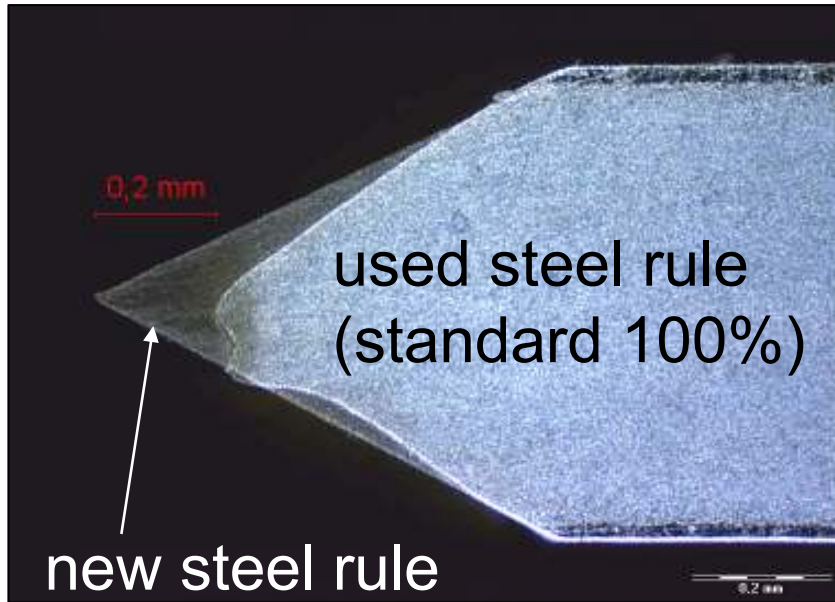


TiN - coated steel rule

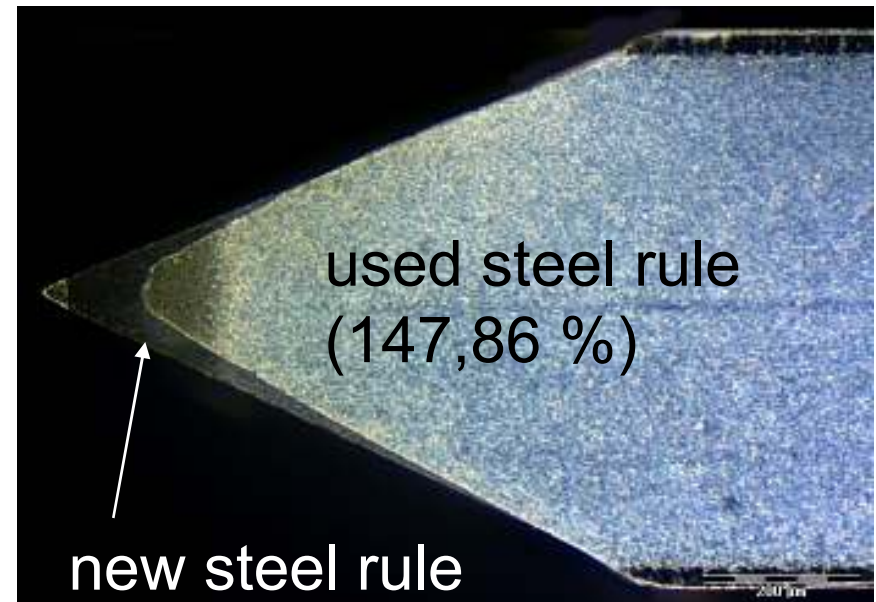


The Böhler TiN - coated steel rule unites high wear resistance, good bendability, less friction and a defined edge hardness for highest quality requirements.

Wear pattern of uncoated vs. TiN - coated steel rules



uncoated steel rule



TiN - coated steel rule

Improvements and Applications

Improvements

- lower friction
- less wear and longer service life
- less dust production
- less fibres (“angel hair“) → better cutting quality

Fields of application

- high runs
- particularly high quality requirements (e.g. medicine)
- coated cardboard (e.g. cigarette boxes, perfumes)